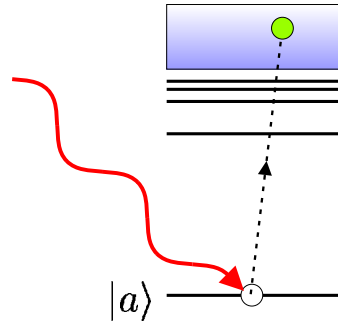


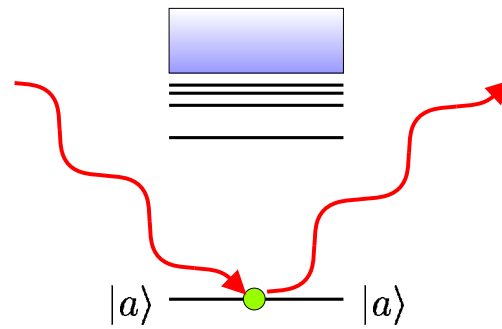
(a) Photoelectric absorption



1st order:

$$\frac{e\mathbf{A}\cdot\mathbf{p}}{m}$$

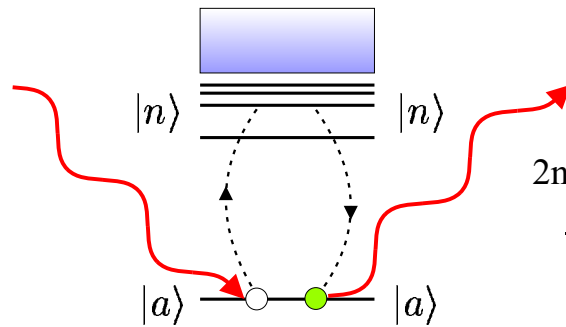
(b) Thomson scattering



1st order:

$$\frac{e^2\mathbf{A}^2}{2m}$$

(c) Resonant scattering



2nd order:

$$\frac{e\mathbf{A}\cdot\mathbf{p}}{m}$$